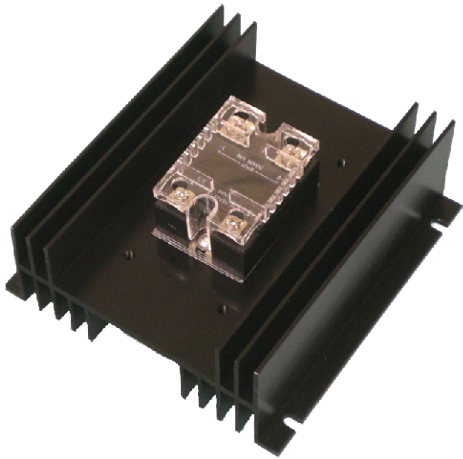


CBM4070

Current Booster Module

External High Current Switch For Auxiliary Output



The Current Booster Module (CBM) is an optically isolated high current MOSFET switch. The CBM can be used to greatly increase the load switching capability of solar charge controllers with load control outputs. The charge controller load control output serves as the input control signal to the CBM and the CBM provides all high current switching for the load.

The CBM output turns on when a 6 – 32VDC signal is present on its input terminals. Input to output optical isolation allows the output to serve as either a low or high side switch. The CBM can also serve as a PWM power driver for the Solar Boost 3024 DUO-Option wind/hydroelectric diversion charge control system. Up to 70 amps can be switched in a DC on/off application or up to 40 amps in a 3024 DUO-Option PWM diversion application.

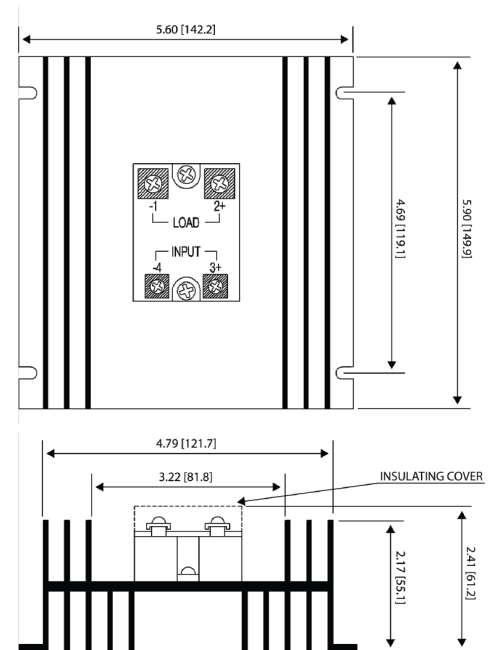
Product Features

- Greatly increases load drive capability of Solar Boost Charge Controller load output
- Switches 70A DC or 40A DUO-Option PWM

Specifications:

CBM4070

Input ON voltage:	6 - 32 VDC
Input ON current:	25 mA
Switched voltage:	35 VDC continuous, 50VDC peak
Max switched current at 400C:	70 A DC on/off 40 A Duo-Option 100Hz PWM
Max surge current:	200 A for 10 mS
Shipping weight:	0.73 kg
Warranty:	Full 5 year limited warranty



BLUE SKY ENERGY CBM4070 DATA SHEET, REVISION 2.0 | 2022

Copyright © 2022 Sunforge LLC. All rights reserved. Changes are periodically made to the information herein which will be incorporated in revised editions of this publication. Sunforge may make changes or improvements to the product(s) described in this publication at any time and without notice.